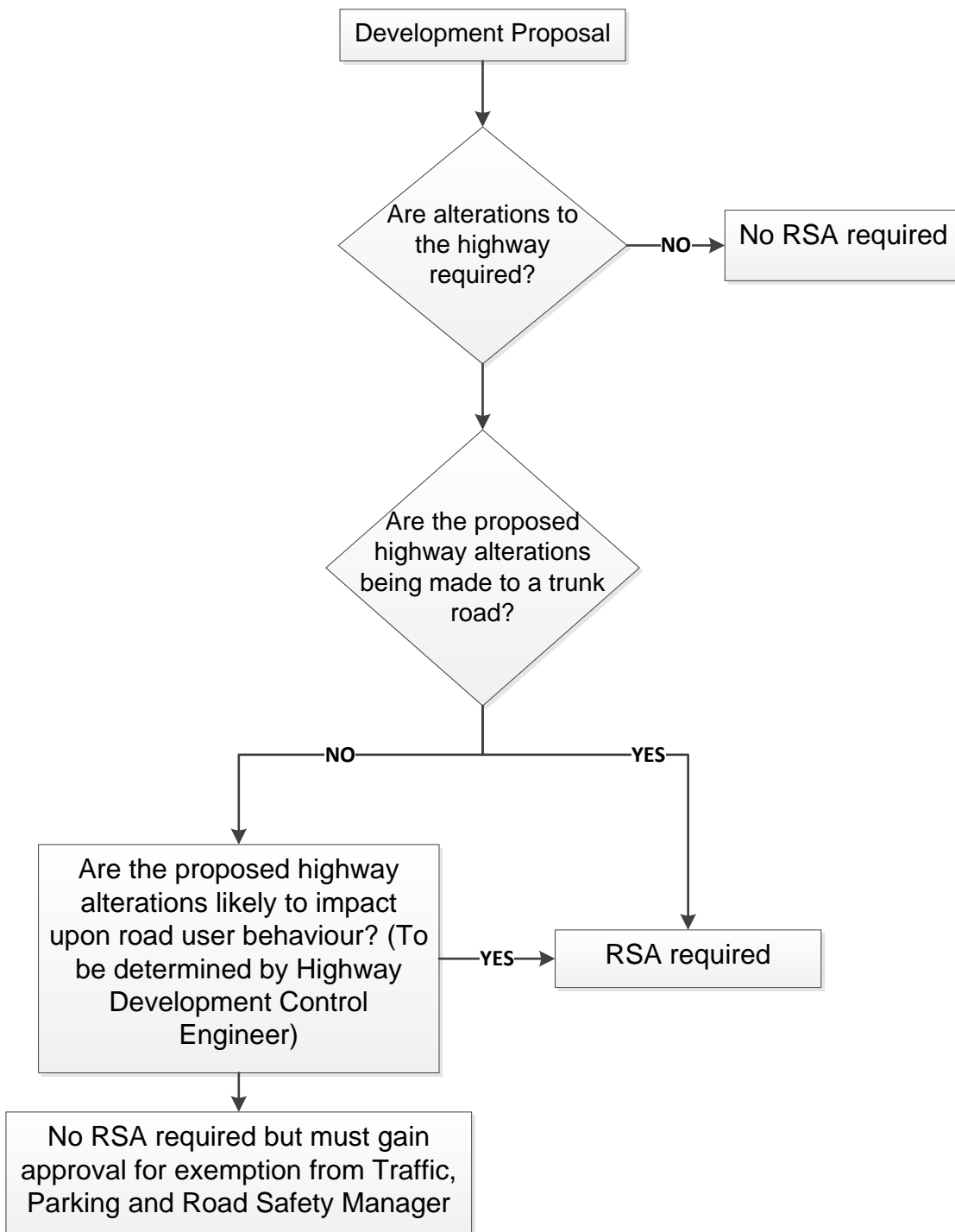


Appendix B – Criteria for Road Safety Audit's



Notes

1. All Road Safety Audits carried out must comply with the procedures detailed within HD 19/15 "Road Safety Audit" which forms part of the Design manual for Roads and Bridges.
2. Where preliminary designs for alterations to the highway are being submitted as part of the supporting documentation for a planning application, a Stage 1 RSA must also be carried out and submitted with these supporting documents and must include the Designer's Response to the RSA report.
3. Sometimes, detailed design drawings may be submitted as part of the supporting documents to support a planning application, such as where the proposed alterations might be quite simple and straight forward. In such cases, a combined Stage 1 and 2 RSA will be required, unless Stage 1 RSA has been carried out previously, in which case, a separate Stage 2 RSA will be required, together with the Designer's Response.